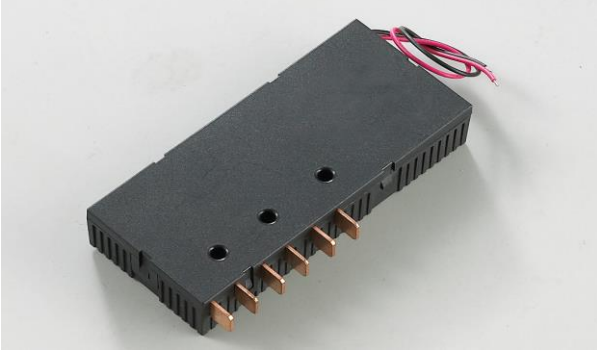


## SH637

### 80A 3PHASE LATCHING RELAY



### Contact Specifications

- Contact Form: 3A(Release), 3B(Operate)  
**Default Form**
- Contact Material: AgSnO<sub>2</sub>
- Contact Resistance: 2 mΩ (1A/6VDC)

### Characteristics:

AMBIENT TEMP.	-40°C ~ +70°C	
VIBRATION RESISTANCE	10-55Hz, 0.5mm (Double Amplitude)	
SHOCK RESISTANCE	98m/s <sup>2</sup> , 11ms	
RELATIVE HUMIDITY	45%~85%	
INSULATION RESISTANCE	1000 M Ω (500VDC)	
DIELECTRIC STRENGTH	BETWEEN CONTACTS	1750 VAC 50/60Hz (1 minute)
	BETWEEN CONTACT & COIL	4000 VAC 50/60Hz (1 minute)
	BETWEEN CONTACT & CONTACT	4000 VAC 50/60Hz (1 minute)
Creepage Distance	8mm	
Electrical Life	≥1 × 10 <sup>4</sup> OPS	
Mechanical Life	≥5 × 10 <sup>5</sup> OPS	
PICK-UP TIME (At rated Voltage):	≤50ms	
RELEASE TIME (At rated Voltage):	≤50ms	
Bounce Time:	≤2ms	
Construction:	DUST protected	
N.W. per unit:	Approx. 170g	

### Features:

Switching Current: 80A max  
 Switching Voltage: 250VAC max  
 Switching power: 20000VA max  
 Dielectric Strength: 4kV/1min  
 (between coil and contacts)  
 RoHS Compliance,  
 Dimensions (mm): 100×45×21

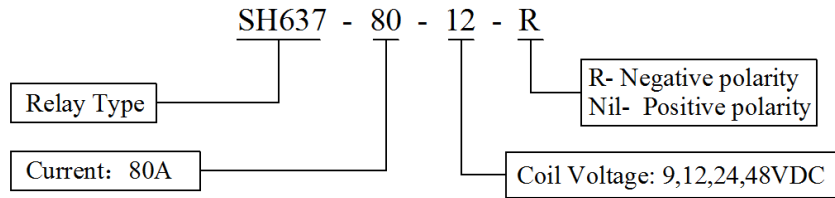
### Coil Data (20°C)

Rated Voltage (VDC)	Pick-up Voltage (VDC)	Pulse Duration (ms) Min	COIL RESISTANCE X (1 ± 10%) Ω	
9	7.2	80	Single Coil Latching	32
12	9.6	80		58
24	19.2	80		230
48	38.4	80		920
9	7.2	80	Double Coil Latching	26
12	9.6	80		29
24	19.2	80		115
48	38.4	80		460
Coil Power Consumption:			Single coil 2.5W Double Coil 5.0W	

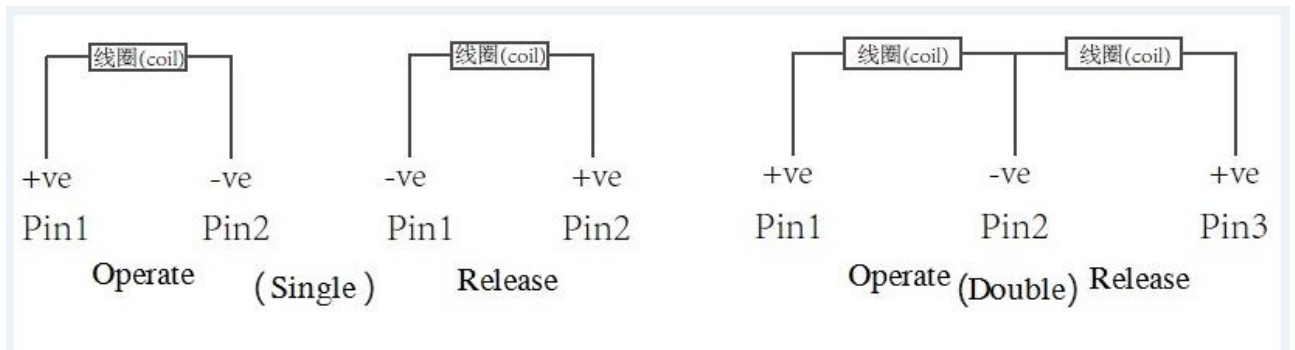
### NOTICE:

- Relay is on the “release” or “operate” status when being released from stock, with the consideration of shock risen from transit an relay mounting, relay would be changed to “operate” or “release” status, therefore, when application (connecting the power supply), please reset the relay to “operate” or “release” status on request.
- In order to maintain “operate” or “release” status, energized voltage to coil should reach the rated voltage, impulse width should be 5 times more than “operate” or “release” time. Do not energize voltage to “operate” coil and “release” coil simultaneously. And also long energized time (more than 1 min) should be avoided.

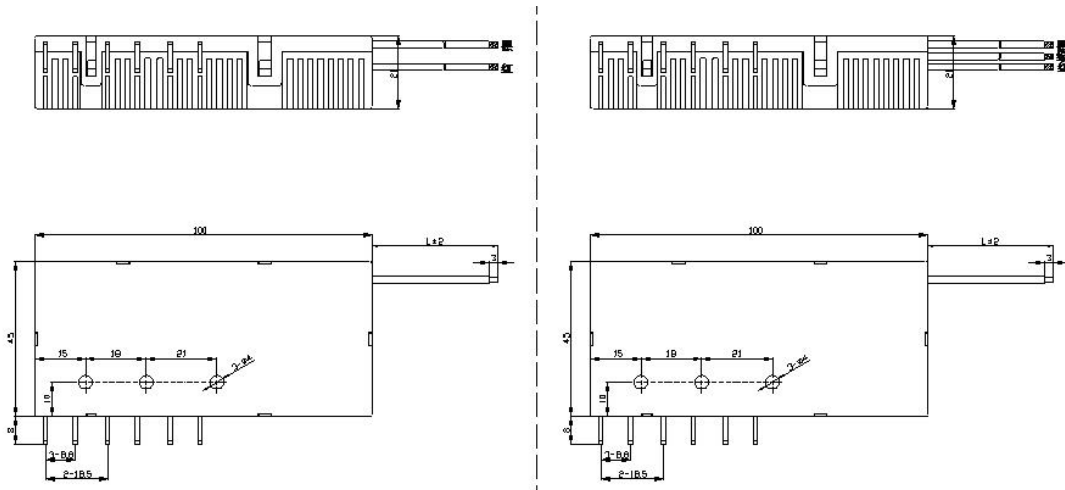
**Ordering Instruction:**



**Wiring Diagram**



**Outline Dimensions (mm):**



Notice: Sample tested during initial release and after any redesign or process change that may affect parameter. Specification is subject to change without notice. Please ask for the newest product specification at any moment.